



# ANCIENT BLOODLINES BEHIND THE BROODMARE HALL OF FAME

By Brenda L. Tippin

**I**f you breed Morgan horses today it is reasonable to assume that you know their parents and grandparents, just as you know your own. These are recent relatives. Here's a quick question: when you consider Cache, whose nine world champion offspring make her the leading Broodmare Hall of Fame inductee, does it occur to you she descends directly on both sides of her pedigree from the Government Morgan Farm foundation sire General Gates, through his 1908 son Bennington? Just as when a person today tracks their own familial history, that is her ancient family.

As *The Morgan Horse* magazine and AMHA's Broodmare Hall of Fame blossomed into prominence after its inception in 2019, historian Brenda Tippin offered to write observations. The article which follows, jam-packed with substantial research, offers students of breeding a roadmap connecting modern day horses with the foundations of America's 230-year-old breed.

Stephen Kinney, Editor

## BACKGROUND

In 2019, the first round of 12 Morgan Broodmare Hall of Fame (BHOE) inductees were profiled in *The Morgan Horse*, after extensive research in bringing such a massive project into reality. Sufficient data exists to track dams of world champions since the beginning of Grand National in 1973, and it was determined that any mare producing three or more world champions should be eligible. This was explained in more detail in the introductory article about the program in the January/February 2019 issue of *The Morgan Horse*, with 12 brief profiles on those who, at that time, were the highest ranked—one with as many as six world champions to her credit. An additional 12 mares were profiled in the 2020 "Breeding Guide." This analysis will use those first 24 profiled mares to show how ancient bloodlines influence descendants today.

Since the earliest days of the Morgan breed, exhibition at military reviews as well as at local, county, state, and world fairs have been a primary means for breeders and owners to compete for prizes and honors attesting to the quality of their stock. Stallions, due to their ability to produce large numbers of offspring more easily, have long had an advantage when it comes to establishing a likelihood that their foals may be winners. In the last few decades, over 300 mares have

taken advantage of embryo transfer (ET), which has enabled mares to produce more foals in a shorter period of time. Still, of those mares so profiled in the BHOE, the number of offspring produced ranges from five to 32, with only a handful of mares ultimately producing more foals than others have historically produced without the aid of ET. These numbers pale in comparison to the

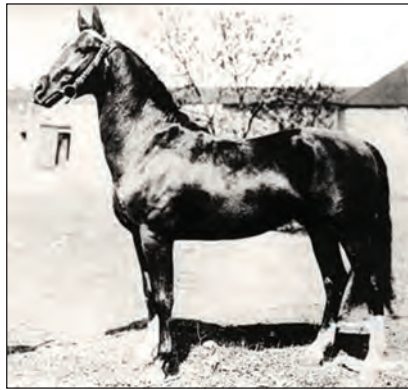
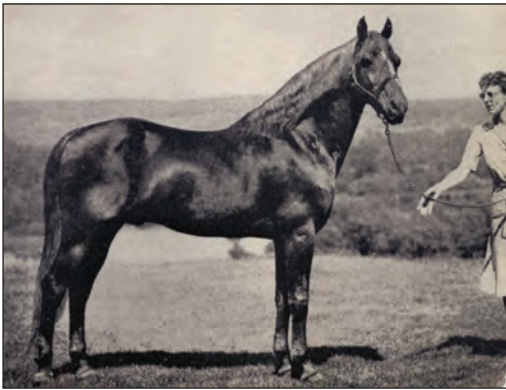
breeding opportunities of stallions, who may easily produce several dozen to a few hundred offspring in a similar timeframe. At the same time, the ability of stallions to breed with many more mares in different parts of the country has been greatly increased by the use of artificial insemination, semen transport, and frozen semen. This also makes it more likely that these prolific stallions will be bred to higher quality mares and further increase chances of producing winners.

Despite all this, every outstanding sire invariably carries a strong influence from his dam, usually a dam who comes from a strong mare line herself, so the value of having exceptional broodmares in a breeding program cannot be overstated.

It is also worth mentioning once more that the large heart gene is carried only on the X chromosome, thus a stallion can only receive it from his dam and can only transmit it to his daughters. The large heart is undoubtedly a factor among show horses as well as those participating in sport disciplines, since it would impact







### ANCIENT BROODMARE SIRES

In any horse breed, some stallions will be sires of sires and others will be known as sires of broodmares—and some are well-known for both. The stallions pictured here are noteworthy for their frequent appearances as the sires of the broodmares listed in tail female lineage—the very bottom line of a pedigree.

**TOP ROW:** Allen King; Billy Bodette, Billy King & Billy Root. **SECOND ROW:** Billy Roberts; Canfield. **THIRD ROW:** Jubilee King; Linsley; Plains King. **BOTTOM ROW:** Sealect; Troubadour Of Willomoor.





## THE FLYHAWK FAMILY (Through Beamington)

The BHOF inductees whose grandsire is Beamington descend in direct sire line from the important Brunk stallion Flyhawk.

LEFT TO RIGHT: Flyhawk, The Aircobra, Mr Breezy Cobra, Beamington.

such qualities as attitude, brilliance, action, and performance ability, naturally causing those individuals to stand out among their competitors. Evidence points to many of these significant mare lines being likely carriers of the large heart gene. Although a stallion cannot pass the large heart gene to his sons, a strong surviving sire line may result when he, his sons, and grandsons continue to be bred back to mares who pass on the large heart to their sons.

The 24 BHOF mares who are the subject of this article descend from three main sire line families. Of these, 15 trace their sire line through the family of Waseeka's Nocturne. One each trace through the Nocturne sons Waseeka's Skylark, Waseeka's Moonshot, and Waseeka's Regal Airs. The remaining 12 of these 15 mares all trace through the Nocturne son Waseeka's In Command, through six different In Command sons. The next sire line family represented is that of Bennington with seven mares tracing through this line. Of these, five trace through the Bennington son Mansfield (x Artemisia) and two through his full brother Ulysses. The Mansfield line further divides with three lines tracing through Serenity Grandmaster (Black River Thor x Serenity Mar Kaye), and the remaining two are daughters of Tedwin Topic (Fiddler's Contender x Waseeka's Cajun Queen) tracing through Goldfield (Mansfield x Juno). Finally, two mares trace their sire line to the Flyhawk family through Beamington. Each of these present remarkable examples of carefully woven breeding programs designed to produce powerful mare lines and targeted outcomes.

## THE FLYHAWK FAMILY ~Through Beamington~



photo © Doug Shiflet

### MISS BLUEGRASS

(Owner, George Schott)

**SIRE LINE:** Bourbon Street/  
Beamington/Mr Breezy Cobra/  
The Aircobra/Flyhawk

**TAIL FEMALE OF SIRE:** Lost  
River Sanfield/Jason's Winett/  
Roubikate/Kitty Hawk by Flyhawk

**SIRE LINE OF DAM:** Majesty  
Of The Pines/UVM Majesty/  
UVM Flash/Upwey Ben Don

**TAIL FEMALE LINE:** Promise Of The Pines/Song Of The Pines/

Angel Cotton/Flashena by Senator Graham

Bred by Judy Whitney Harris and foaled in 1986 out of the little-known mare Promise Of The Pines (Majesty Of The Pines x Song Of The Pines), Miss Bluegrass was a chestnut mare marked with a small, elongated star, left hind fetlock, and right hind coronet. Seven of her foals were produced through embryo transfer but according to her BHOF profile published in 2019, she carried most of her own foals and lived to be 30 years old. Her broodmare sire, Majesty Of The Pines, was a son of UVM Majesty (UVM Flash x UVM Goddess), and out of Predicament (Tomic Starfire x Glenway's Diamante). Tomic Starfire's dam was Mountain Meadow Eve, by Upwey Ben Don and out of Dottie Irene by Flyhawk.

Both Upwey Ben Don and Flyhawk traced through exceptionally strong dam lines and showed every evidence of having the large heart gene and passing it on to their daughters. Her second dam, Song Of The Pines, was a daughter of Brorock Marquinn (Ulendon x Mayquinn), and her third dam, Angel Cotton, was a daughter of Major Cotton (Cotton Hill's Choice x Missouri's Jubilee Queen). The tail female line of Miss Bluegrass traced through L. U. Sheep Ranch breeding, following a classic pattern in which Helen Brunk Greenwalt played a major hand: her 4<sup>th</sup> dam, Flashena, was a daughter of Senator Graham; 5<sup>th</sup> dam Lustre by Plains King; 6<sup>th</sup> dam Shoshone by Flyhawk; and 7<sup>th</sup> dam Eula by a son of Dan Patch.

## HAVENWOOD'S BEAM-QUE



(Owner, Patricia Ryan)

**SIRE LINE:** Beamington/  
Mr Breezy Cobra/The Aircobra/  
Flyhawk

**TAIL FEMALE OF SIRE:**  
Ellen Bar/Elberty Linsley/Dolly  
D/Donbelle by Donald

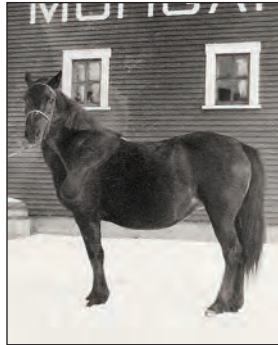
**SIRE LINE OF DAM:** Gay  
Cavalier/Gay Dancer/Havolyn

Dancer/Ulendon

**TAIL FEMALE LINE:** Green Meads Queen/Abbingdon Of Shady  
Lawn/Gadabbott/Babs/Dewdrop by General Gates

Bred by Suzanne and Duane Hanson and foaled in 1986, Havenwood's Beam-Que was a chestnut mare marked with a small





### TAIL FEMALE LINES

These historic mares are tail female ancestors of contemporary Broodmare Hall of Fame inductees. All the images are from AMHA's electronic archive. Mares were and (still are) less frequently documented in photos than stallions. Many images of both BHOF mares and their ancestors are not the best quality, or best representation of the horse. One must look beyond this to appreciate the beauty and genetic contribution of these mares.

**TOP ROW:** Abbingdon Of Shady Lawn; Brown Mae; Miller's Adel; Ellen. **SECOND ROW:** Dewdrop; Old Jennie; Windcrest Prima Donna & foal Helicon Pegasus; Triconga & foal. **THIRD ROW:** Ruth; Townshend Lass; Quietude & foal.

**BOTTOM ROW:** Juno & colt; Vigilda Jane & foal; Narissa & foal Dimity. (photos © A. C. Drown, W. Patriquin, Launsbach)



star, out of Green Meadows Queen by Gay Cavalier. Profiled in 2020, she is the dam of 11 foals, none of which were produced by ET, and has four world champions among her offspring. Her sire, Beamington, was bred by Helen Brunk Greenwalt and was sired by Mr Breezy Cobra (The Airacobra x Jenney Lake) and out of the exceptional mare Ellen Bar, bred by the Chilocco Agricultural School.

A daughter of Barberry (Night Tide x Betty Barr) and Elberty Linsley (Linsley x Dolly D), Ellen Bar was the dam of six foals, including the noted Senator Barr (x Senator Graham). Barberry's dam, Betty Barr, was out of Daisy Knox (x Knox Morgan; her 2d dam Daisy De Jarnette by Jubilee De Jarnette; 3d dam Ben's Daisy [x Ben Franklin] and 4th dam Daisy by Billy Bodette). Ellen Bar's dam, Elberty Linsley, was a daughter of Linsley; 2d dam Dolly D by Dude Hudson; 3d dam Donbelle by Donald.

Beam-Que was out of Green Meadows Queen by Gay Cavalier (Gay Dancer x Vigilda Burkland by Vigilant), and second dam Abbington Of Shady Lawn by Plains King (Romanesque x Ella Linsley). She traced her tail female line to the US Government Farm with her 3d dam Gadabbott by Abbott; 4th dam Babs by Ulysses; 5th dam Dewdrop by General Gates; and 6th dam the US Government foundation mare Ellen (Rocky Mountain x Lamb mare by Young Benedict Morrill).

## THE BENNINGTON FAMILY ~Through Fleetwing~



### CACHE

(Owner, Indian Creek Morgan Farm)

**SIRE LINE:** DBA Street Talk/Serenity Masterpiece/Serenity Grandmaster/Black River Thor/Fleetwing/Captor/Mansfield/Bennington

**TAIL FEMALE OF SIRE:** Kinglow's Cherish/Devan Danvere/Devan Dancer/Fancy Free/Captor's Princess/Ceres/Lady Sealect by Sealect

**SIRE LINE OF DAM:** Serenity Masterpiece/Serenity Grandmaster/

Black River Thor/Fleetwing/Captor/Mansfield/Bennington

**TAIL FEMALE LINE:** Fleeting Heart/Serenity Memoryflite/Ironbrook Holly/Devan Neva/Devan Sal/Starflake/Ceres/Lady Sealect by Sealect

Bred by Michael and Karen Super of Clayhill Farm and foaled in 1987 out of Fleeting Heart (Serenity Masterpiece x Serenity Memoryflite), Cache tops the list of BHOF world champion producers. Profiled in 2019 with six world champions, she now has nine with 2020 totals. As of 2020, she has produced 24 foals, all by ET. She is also the dam of three Grand Champion-titled horses. With strong Devan breeding in her background, Cache traces her sire line through Fleetwing and carries five crosses to him in five generations. Fleetwing carries two crosses to Narissa, who was out of the Government foundation mare Ellen, important in many BHOF pedigrees.

Cache's sire, DBA Street Talk, and her dam, Fleeting Heart, were both sired by Serenity Masterpiece (Serenity Grandmaster x Serenity Remember Me, tracing in tail female to L. U. Sheep

Ranch breeding). She also carries four crosses to the legendary Vigilmarch (Orcland Vigildon [Ulendon x Vigilda Burkland] x Mayphil by Magellan). An elegant black chestnut, Vigilmarch was Grand Champion Stallion of the 1959 Eastern States and National Morgan Horse Shows. Of particular interest, his 4th dam was Quietude (Troubadour Of Willowmoor x Ruth), who boasted one of the richest old New England pedigrees of any mare bred by the US Government Farm. Quietude was out of Ruth by Reynard; 2d dam Laura Jay by Ethan Allen 3d; her 3d dam Fanny Jay by Billy Roberts and traced her tail female line to the Belden mare by Streeter Horse. Cache's tail female line traces back through Lady Sealect by Sealect, and old Vermont breeding to the Flint Mare by Manchester Black Hawk.



photo © Howard Schatzberg

### POMPP AND PAZAZZ

(Owner, The Peanut Gallery)

**SIRE LINE:** Serenity

Masterpiece/Serenity

Grandmaster/

Black River Thor/Fleetwing/

Captor/Mansfield/Bennington/

General Gates

**TAIL FEMALE OF SIRE:**

Serenity Remember Me/Vicky

V/Luxury/Mallow/Larkspur by

Flyhawk x mare by son of Dan Patch

**SIRE LINE OF DAM:** Dee-Cee Mr Trophy/Trophy/Mentor/Goldfield/Mansfield/Bennington/General Gates

**TAIL FEMALE LINE:** Cy Don's Cynthia/HLM Temptress/Starlite Frolic/Devan Lady Firelite/Devan Glo/Gorgeous/Romance/Narissa by Troubadour of Willowmoor

A daughter of Serenity Masterpiece, Pompp And Pazazz was a chestnut mare marked with a star, strip, snip, and both hind stockings, bred by Mike Super and foaled in 1987. Among the 2020 BHOF inductees she is the dam of 20 foals, mostly through ET, and her offspring include five world champion and five Grand Champion-titled horses. Pomp And Pazazz was the first of 12 foals produced by Cy Don's Cynthia, who was a daughter of Dee-Cee Mr Trophy (Trophy x Dee Cee Caprice), and carried six crosses to Devan foundation stallion Captor in six generations. Trophy represented five generations of U. S. Government Farm breeding and careful selection for quality and performance. Foaled in 1949, his sire was Mentor (Goldfield x Fairytan) and his dam was Norma (Canfield x Romance, 2d dam, Narissa).

Dee Cee Caprice was a daughter of Deerfield Challenger (Orcland Leader x Ladyfield by Mansfield). Ladyfield's dam was Little Troub by Troubadour Of Willowmoor, tracing her tail female line to a daughter of Flying Morgan by Hackett Horse. Dee Cee Caprice's dam was Cap's Starlet, by Devan Cap (O C R by Captor x Caprice by Captor), and out of Flyella (Flyhawk x Silver Heels). Silver Heels traced to Brunk breeding through her sire and trotting blood through her dam. The dam of Cy Don's Cynthia was HLM Temptress (Tas-tee's Firefly x Starlite Frolic) tracing to more Devan and Brunk lines. Her tail female line also traces back to Narissa by Troubadour Of Willowmoor, and the Government foundation mare Ellen.



### THE BENNINGTON FAMILY (Through Ulysses, Fleetwing & Goldfield)

Influential modern day sires Tedwin Topic, Serenity Masterpiece, and the mare Lost River Sanfield descend in direct sire line from the General Gates son, Bennington. **TOP ROW:** Bennington, Mansfield, Ulysses. **MIDDLE ROW:** Fleetwing, Goldfield. **BOTTOM ROW:** Ulendon, Orcland Leader & Orcland Vigildon.



### RUSH TO JUDGEMENT

(Owner, Fire Run Farm)

**SIRE LINE:** Timelok/Serenity Masterpiece/Serenity Grandmaster/Black River Thor/Fleetwing/Captor/Mansfield/Bennington  
**TAIL FEMALE OF SIRE:** MK's Super Kay/Serenity Tender Mist/Sea Mist/Red Jewell/Starless Night/Malou/Lida/Jay/Tony/Black Beauty/Black Doll 3d by Illinois Black Hawk

**SIRE LINE OF DAM:** Dee-Cee Mr Trophy/Trophy/Mentor/Goldfield/Mansfield/Bennington/General Gates

**TAIL FEMALE LINE:** Cy Don's Cynthia/HLM Temptress/Starlite Frolic/Devan Lady Firelite/Devan Glo/Gorgeous/Romance/Narissa by Troubadour of Willowmoor

Another daughter of Cy Don's Cynthia, and sired by the Serenity Masterpiece son Timelok, Rush To Judgement shares a very similar pedigree to Pompp And Pazazz. Also bred by Mike and Karen Super of Clayhill Farm, she is a black mare marked with both hind socks and foaled in 1994 and is among the BHOF inductees of 2021. Rush To Judgement is the dam of 12 foals, all



for Kurt and Teri Rumens of Fire Run Farm who owned her to the end of her life. None of her foals were produced by ET. She has four world champions and one Grand Champion-titled horse among her offspring.

Her sire, Timelok, is out of MKS Super Kay (Serenity Grandmaster x Serenity Tender Mist). Thus, the sire and dam of her sire shared the same sire line. Serenity Tender Mist, the second dam of Timelok, like the dam of Serenity Masterpiece, was a daughter of Black River Major, but was out of Sea Mist (Sea Breeze x Red Jewel). Sea Breeze was a son of Captor and out of Ceres by Bennington, 2d dam Lady Sealect by Sealect; and tracing her tail female line to the Flint Mare by Manchester Black Hawk). Red Jewel was by the Jubilee King son Tiny Tim whose dam, Timai (Tiffany x African Maid), traced her female line through to a daughter of Billy Folsom by Streeter Horse and tracing his tail female to the Shedd mare by Randolph Morgan. Red Jewel's dam was Starless Night by the Bennington son Shenandoah who was out of Ruby by Pete Morgan. Red Jewel traced her tail female line back through Midwest breeding and the Black Doll mares to a daughter of Woodbury Morgan.

### ~Through Goldfield~



#### **CENTURY ENJOLIE**

(Owner, Stonecroft Farm)

**SIRE LINE:** Tedwin Topic/  
Fiddler's Contender/Red Pepper/  
Goldfield/Mansfield/Bennington  
**TAIL FEMALE OF SIRE:**

Waseeka Cajun Queen/Corrine/  
Cynthia/Cinnamon Doll by  
Cinnamon Lad by Plains King

**SIRE LINE OF DAM:** Lord  
Appleton/Waseeka's Nocturne/  
Starfire/Senator Graham

**TAIL FEMALE LINE:** Appleton Baroness/Wilde Nancy Lynn/  
Little Girl/Nubbin/Hannah by Donaldson by Donald

A bay mare marked with right hind heel, bred by Michael and Trudy Case, Century Enjolie was out of Appleton Baroness, foaled in 1990. She was the first to win the World Champion Mare title as a yearling, as well as World Champion Junior Mare, and she went on to produce 15 foals. Several of these were produced by ET, and her offspring include five world champions. She was a daughter of Tedwin Topic (Fiddler's Contender x Waseeka's Cajun Queen), who was an exceptional producer of broodmares.

The dam of Tedwin Topic was Waseeka Cajun Queen, who produced 12 foals. She was a daughter of Waseeka's Nocturne, by the elegant Senator Graham son Starfire (x Wanda of L. U. Sheep Ranch breeding) and out of Upwey Benn Quietude, a full sister of Upwey Ben Don. Her sire was Upwey King Benn (Upwey King Peavine x Audrey), and her dam Quietude, already mentioned. Upwey Benn Quietude was New England Champion Saddle Horse as a three-year-old in 1947, and in 1954 was Grand Champion Pleasure Horse at the National Morgan Show.

Century Enjolie's dam was Appleton Baroness, a daughter of Lord Appleton (Waseeka's Nocturne x Vigilmay, full sister

of Vigilmarch), and her second dam was Wilde Nancy Lynn by Red Pepper. Thus, the Red Pepper line of Century Enjolie's sire is repeated twice in her pedigree. Her tail female line traces through Nubbin, a daughter of Lippitt foundation sire Bilirubin (Donaldson x Mayflower) and Lippitt foundation mare Hannah (Donaldson x Maggie Morgan).



#### **CENTURY OAK DENALI**

(Owner, Aljak Acres)

**SIRE LINE:** Tedwin Topic/  
Fiddler's Contender/Red Pepper/  
Goldfield/Mansfield/Bennington

#### **TAIL FEMALE OF SIRE:**

Waseeka Cajun Queen/Corrine/  
Cynthia/Cinnamon Doll by  
Cinnamon Lad by Plains King

**SIRE LINE OF DAM:** Pinehaven  
Sinbad/Pinehaven Chief/Funquest

Gojekell/Funquest Falcon/The Brown Falcon/Flyhawk

**TAIL FEMALE LINE:** Rose Valley Rhapsody/Pinehaven Missy/  
Missy Monte Cantor/Monte Gay/Gay Gipsey/Jipsey Allen/Jipsey  
L/Hazel Dude/Hazel S/Diamond/Kate/mare by Wilson's Blue  
Bull/mare by Wild Tom Jr/mare by Campbell's Copperbottom

Another daughter of Tedwin Topic, Century Oak Denali was a bay mare marked with left hind pastern; bred by Muriel and Robert Herrick, she was foaled in 1994. She produced 13 foals, none of which were ET, and five of her offspring have become world champions. A remarkable producer for Aljak Acres, 11 of her foals have been by Aljaks Double Whammy (Century Free Spirit x Liberation Starbrite). Her dam, Rose Valley Rhapsody, was a daughter of Pinehaven Sinbad who traced to Funquest breeding through his sire, and was out of the mare Waseeka's Summertime (Parade's Jubilee x Mistress Merridawn by Lippitt Ethan Don).

Mistress Merridawn's dam was Choice Mistress (Choice Master x Pondette) who traced to Hill and Sellman breeding. Choice Master was by the Government-bred stallion Querido, one of the famous full brothers of the Bennington x Artemisia cross (see *The Morgan Horse*, January/February 2017), and out of the Headlight Morgan daughter Hemala, who traced her female line through Sellman breeding to Octoroon #302.

The second dam of Century Oak Denali was Pinehaven Missy (Applevale Lockinvar by Pecos x Missy Monty Cantor). Missy Monty Cantor was a daughter of UVM Cantor, who traced through four generations of Government breeding through her sire and through her dam traced through the early California breeding of E. W. Roberts to the Midwest breeding of Elmer Brown, a blend of Government, Brunk, and Sellman breeding.

### ~Through Ulysses~

#### **LOST RIVER SANFIELD**

(Owner, Judy Whitney Harris)

**SIRE LINE:** John Wayne Brady/Jody's Ace Of Spades/Springbrook/  
Mansfield/Quizkid/Ulysses/Bennington/General Gates

**TAIL FEMALE OF SIRE:** Miranda Brady/Lizza's Black Beauty/  
Lizza/Yellow Girl/Buck by Imperial

**SIRE LINE OF DAM:** Devan Jason/Captain Fillmore/Fillmore/Mansfield/Bennington/General Gates

**TAIL FEMALE LINE:** Jason's Winett/Roubikate/Kitty Hawk/Annabella/Daisy Knox/Daisy De Jarnette/Ben's Daisy/Daisy by Billy Bodette

Lost River Sanfield, foaled in 1975, was a bay mare with no markings, bred by Dr. Don and Sandra Fields of Indiana. She is credited with 11 foals (none of which were born by ET), six of whom are world champions. Several other mares on the list of BHOF inductees have Lost River Sanfield in their pedigrees and one of her daughters, JW Belle Aire, has also attained BHOF status. Lost River Sanfield traces her sire line through Quizkid by Ulysses, who was another of the famous full brothers from the Bennington x Artemisia cross. Her sire, John Wayne Brady, was out of Miranda Brady, a daughter of Payday (Mansfield x Gladys), who traced her female line to Brunk and Cross Ranch breeding.

The dam of Lost River Sanfield was Jason's Winett (Devan's Jason x Roubikate). Bred by Merle Evans, Devan Jason was by Captain Fillmore (Fillmore x Gadabott) and out of Ladycap (Captor x Roz). Both Captain Fillmore and Ladycap had four generations of solid Government breeding through sire and dam, Ladycap's tail female line traced to the Flint mare by Manchester Black Hawk. Roubikate was a blend of Brunk, Elmer Brown, and Sellman breeding. Her sire was Roubidoux (Agazizz x May Rockwood by Rockwood), and her dam was Kitty Hawk by Flyhawk. Her 2d dam was Annabella by Plains King, and 3d dam Daisy Knox by Knox Morgan, with her tail female line tracing through J. C. Brunk's foundation mare, Daisy by Billy Bodette, to a daughter of Sherman Morgan.



## HRH TROPHYET

(Owner, Chester & Judith Caldwell)

**SIRE LINE:** Chasley Superman/Orcland Leader/Ulendon/Ulysses/Bennington x Silverthorn Trophyet

**TAIL FEMALE OF SIRE:** Rena/Nubia/Fairytop/Topaz/Lady Lyndon/Brown Beauty/Beauty/Horace Hall Mare/Milkingstool

by Billy Root

**SIRE LINE OF DAM:** Trophy/Mentor/Goldfield/Mansfield/Bennington/General Gates

**TAIL FEMALE LINE:** Silverthorn Trophyet/Nel-J-Ca-Che-A/Miss Step-Along/Bar F First Lady/Tippy-Dee/Tippy Tin/Ceres/Lady Sealect by Sealect

Bred by Harold Hoover, HRH Trophyet was a chestnut mare marked with a star and narrow strip, foaled in 1980, and profiled in the Broodmare Hall of Fame in 2020. She produced nine foals, none by ET, four of whom are world champions. Royally bred, she was a daughter of the popular sire Chasley Superman (Orcland Leader x Rena).

Rena, the dam of Chasley Superman, was a daughter of Magellan (Goldfield x Topaz), and out of Nubia by Hudson, a son

of the Saddlebred Admiral Denmark. Hudson's dam was Redfern (Bennington x Artemisia). Nubia was out of Fairytop (Delmont x Topaz). The tail female line traces through Milkingstool to a daughter of Justin Morgan. Rena also traced to Milkingstool through the female lines of her sire's dam, her dam's sire, and her own tail female line. Norma's dam was Romance, a daughter of Bennington and Narissa.

Silverthorn Trophyet, the dam of HRH Trophyet, was a daughter of Trophy (Mentor x Norma), another great broodmare sire (see Renee Page's article, "The Daughters of Trophy," *The Morgan Horse*, February 2012). Both Mentor's dam Fairytop (Delmont x Topaz) and Norma's sire Canfield (Bennington x Artemisia) also traced their tail female line to the Milkingstool mare.

Nel-J-Ca-Che-A, the second dam of HRH Trophyet, was by the Orcland Leader son Krinisor's Rob Robin who was out of the mare Krinisor by Corisor Of Upwey (Cornwallis x Arissa [Mansfield x Narissa]) and tracing his female line to a daughter of Brookside by the prolific Lippitt sire Ashbrook (Croydon Prince x Nancy). HRH Trophyet's female line continued through more Devan and Government breeding through Lady Sealect to the Flint mare by Manchester Black Hawk.

## THE WASEEKA'S NOCTURNE FAMILY

Waseeka's Nocturne was by the Senator Graham son Starfire, whose dam, Wanda, was bred by the L. U. Sheep Ranch. His dam, Upwey Benn Quietude (Upwey King Benn x Quietude), was a full sister of Upwey Ben Don. These two lines were woven together for many years, building a family that is still dominant today, especially in show bloodlines.

## ~Through Waseeka's Regal Airs~



## LAKEHURST SWEET SUE

(Owner, Sir's Place Morgans)

**SIRE LINE:** Topside Tough Stuff/Waseeka's Regal Airs/Waseeka's Nocturne/Starfire/Senator Graham

**TAIL FEMALE OF SIRE:** Dusky Bridlesweet/Dudette/Duchess Bridlesweet/Daisy L/Lemax/Bird Hudson/Helen S/Fan/Henry Hodges Mare by Campbell's Copperbottom

**SIRE LINE OF DAM:** Skagit Alki/Skagit Vashon/Highwood L/Lobo/Jubel/Jubilee King

**TAIL FEMALE LINE:** Topside Serenade/Mon Heir Hope/Mon Heir Felicity/Gratitude/Adam's Traveler/Queen Beatrice/Alice Dean/Minnie Dean/Jennie by Billy King

Lakehurst Sweet Sue was a brown mare with no white, bred by Hazel Blake, foaled in 1971 and profiled in 2020. She produced 16 foals, none by ET, four of whom world champions. Her sire, Topside Tough Stuff, was a son of Waseeka's Regal Airs (Waseeka's Nocturne x Varga Girl), who was Grand Champion Stallion of the 1963 Circle J National Morgan Show.

Dusky Bridlesweet (Archie T x Dudette), the dam of Topside Tough Stuff, traced to C. J. O'Neill breeding through both her





### THE WASEEKA'S NOCTURNE FAMILY

(Through Waseeka's Regal Airs; Waseeka's Skylark, Waseeka's Moonshot)

Waseeka's Nocturne is such an influential name in Morgan pedigrees, it is often overlooked that he is sired by Starfire who was by Senator Graham. Though he established the Waseeka Farm's dynasty, he also represents that other dynasty, the Brunks. **TOP ROW:** Senator Graham, Starfire.

**BOTTOM ROW:** Waseeka's Nocturne; Waseeka's Skylark, Waseeka's Moonshot.

sire and dam. These lines contain many crosses tracing back to Sherman Black Hawk through his son King Herod, as well as early Brunk lines through Chetco (Ben Franklin x Nelly B) and St L (Rancho x Ben's Daisy), tracing in tail female line to a daughter of Campbell's Copperbottom.

The dam of Lakehurst Sweet Sue was Topside Serenade (Skagit Alki x Mon Heir Hope). Her sire, Skagit Alki, was out of Vigella (Vigilant by Welcome x Sirenelle by Sir Ethan Allen), solid old Vermont breeding, and yet another female line tracing through the Milkingstool mare to a daughter of Justin Morgan. Skagit Vashon was a blend of Brunk and C. X. Larrabee breeding through his sire, and Government and Sellman breeding through his dam. Mon Heir Hope traces though more Brunk, Government, C. X. Larrabee, and T. P. Royce breeding to Jenny by Billy King (Wildair x Nelly), a little-known horse with ten crosses to Justin Morgan in six generations, two of which were in four generations and one more in seven.

### ~Through Waseeka's Skylark~

#### **SOUTHVIEW WHISPER**

(Owner, Cedar Creek Farm)

**SIRE LINE:** Royal Oaks Annton/  
Waseeka's Skylark/Waseeka's  
Nocturne/Starfire/Senator  
Graham

**TAIL FEMALE OF SIRE:**  
Windcrest Ann/Wind-Crest  
Annfield/Annfield/Sally Ann/



Berry's Bess/Belle/Daisy by Houghton's Beauty

**SIRE LINE OF DAM:** Caven-Glo Revenue/Superson/Supersam/  
Lippitt Sam/Ashbrook/Croydon Prince/Peter's Ethan Allen 2d

**TAIL FEMALE LINE:** Tapnor Top Secret/Libby Ashmore/Spring  
Darling/Townshend Lass/Gladwin/Delight/Topsy by Billy Bodette

Bred by Robert Redding, Southview Whisper was a bay mare with no markings foaled in 1979. She is the dam of 10 foals,

none produced by ET, four of whom are world champions. Her sire, Royal Oaks Annton, was a son of Waseeka's Skylark and out of the Upwey Ben Don daughter Windcrest Ann, who traced her female line through Government and old Vermont breeding to Daisy by Houghton's Beauty (Houghton's Billy x mare by Caledonia), a great grandson of Morrill. Waseeka's Skylark was out of another Upwey Ben Don daughter, Windcrest's Delight, who was out of Seneca Sweetheart by Cornwallis. Her tail female line traced through Government breeding to the Henry Lathrop mare by Green Mountain Banner Jr #1262, a beautiful golden chestnut great-grandson of Black Hawk.

The dam of Southview Whisper was Tapnor Top Secret (Caven Glo Revenue x Libby Ashmore), representing several generations of Frances Bryant's breeding on both sides of her pedigree, blending the blood of Jubilee King with old Woodbury lines. The dam of Caven Glo Revenue was Caven Glo Rebel Gold (Cavendish x Jubilee's Gloria by Jubilee King). She traced her tail female line through the exceptional producer Townshend Lass (John A Darling x Gladwin) to Topsy by Billy Bodette and on to a daughter of Hale's Green Mountain Morgan. Townshend Lass was a full sister to champion endurance mare Sadwin, named Morgan Horse of the Year in 1941 for her many achievements in the Maine Trail Ride and Vermont 100-Mile Ride.

## ~Through Waseeka's Moonshot~



### JLS DEER SAL

(Owner, James Hangley  
& Tracy Feitz)

**SIRE LINE:** Waseeka's Moonshot/  
Waseeka's Nocturne/Starfire/  
Senator Graham

**Tail female of sire:** Windcrest's  
Delight/Seneca Sweetheart/  
Hepatica/Isis/Ruby/Henry Lathrop  
mare by Green Mountain Banner

**SIRE LINE OF DAM:** UVM

Flash/Upwey Ben Don/Upwey King Peavine

**TAIL FEMALE LINE:** Deerfield's Ruthie/Frosty Gale/Triconga/  
Tifona/Molly/Chester Thomas mare by Allen King

A chestnut mare marked with a crescent star, bred by JL Ranch and Pierre Loiselle, JLS Deer Sal was foaled in 1985. She is the dam of 14 foals, several produced by ET. Among her offspring are five world champions and one Grand Champion-titled horse. Her sire, Waseeka's Moonshot, was out of Windcrest's Delight (Upwey Ben Don x Seneca Sweetheart). Seneca Sweetheart was a daughter of Cornwallis (Sealect x Cornwall Lass) out of Hepatica (Monterey x Isis). Monterey was used for Remount service, used on the Crow Reservation for herd improvement, and later transferred to the U. S. Forest Service. Both his sire, Mansfield, and his dam, Scottana (Scotland x Roxanna by Rocky Mountain), were bred by the US Government Farm. Isis was a daughter of Claremont (Lambertus by Daniel Lambert x Kate Allen by DeLong's Ethan Allen). Her dam was Ruby, who was also by DeLong's Ethan Allen, and out of the Henry Lathrop mare by Green Mountain Banner.

Deerfield's Ruthie, the dam of JLS Deer Sal, was a daughter

of UVM Flash (Upwey Ben Don x Norma) who carried the exceptionally strong female lines through his dam tracing through the Milkingstool mare and the Lamb mare by Young Benedict Morrill. Her second dam, Frosty Gale, was by The Airacobra (Flyhawk x Sentola); 3d dam Triconga (Congo x Tifona), and her tail female line traced to the Chester Thomas mare by Allen King (Allen Franklin x Black Bess).

## THE WASEEKA'S IN COMMAND FAMILY

Though a son of Waseeka's Nocturne, this single stallion is so dominant that he merits his own family named after him. The leading sire line for mares inducted into the Broodmare Hall of Fame is that of Waseeka's In Command (Waseeka's Nocturne x Miller's Adel), which is responsible for twelve remaining mares so far profiled. This is further branched in tracing through five different In Command sons. Waseeka's In Command was out of the Upwey Ben Don daughter Miller's Adel, his second dam was Gertie G, by the Mansfield son Tipperary and out of Folly by Bennington, tracing her female line to a daughter of American Star Jr, son of Seely's American Star.

## ~Through I Will Command~

Regarded as one of the most legendary of Trophy's many outstanding daughters, Trophy's Corrigan, the dam of I Will Command, was out of Emanon (Edonijah's Playboy x Miss Farolita). Emanon was not expected to be an exceptional producer but a closer look at her pedigree is in order. Her grandsire, Mr Showman, was out of Lippitt Sally Moro (Lippitt Moro x Lippitt Sally Ash). These lines were the best of Robert Lippitt Knight's program, tracing in female line to the Meacham mare by the Dr. Sias Black Horse (Black Morgan x mare by Dr. Sias Horse). Mr Showman's sire was Marilyn Childs' famous stallion, Lippitt Mandate, a son of Mansfield and out of Lippitt Kate Moro (Moro x Croydon Mary), considered one of Mr. Knight's most prized mares. The dam of Edonijah's Playboy was Chikeeta, a Senator Graham daughter, who traced her female line back through the typical pattern of L. U. mares which proved so powerful under the watchful eye of Helen Brunk Greenwalt.

Emanon's dam was Miss Farolita, a daughter of Cotton Eye Joe Geddes (Kenny's King Cotton x Ruthven's Peggy Ann), bred by Dr. Alexander Ruthven. Kenny's King Cotton was a son of Cotton Hill's Choice, bred by Thomas Brunk, and his dam, Lady Helen, was yet another L. U.-bred mare. Ruthven's Peggy Ann represented several generations of Dr. Ruthven's careful breeding, tracing her female line to the George Fellows mare by Danville Boy, a son of Perkins's Young Morrill. Emanon's second dam was Nylon, another L. U.-bred daughter of Senator Graham. The pun of Emanon's name (Emanon is "no name" spelled backwards), whatever was intended, gave no clue to the powerful genetic package she carried. After Trophy's Corrigan was foaled, Emanon was sold to Patricia Keith in Palmdale, California, where she spent her remaining years. She produced eight more foals by Buckeye Archie (Archie O x Springbrook Wynette) for a total of 10 after her first two by Trophy (her first was a gelding, Trophy Lee). Only one of her other offspring was ever bred, producing one foal, a gelding. Thus, her only legacy was through Trophy's Corrigan, but it was a profound





### THE WASEEKA'S IN COMMAND FAMILY

(Through I Will Command, Noble Command, Tug Hill Command, Troutbrook Hallmark, Carlyle Command, Wham Bam Command)

The Waseeka's Nocturne son Waseeka's In Command is so dominant in Morgan show horse pedigrees today he can be considered a family of his own. A January/February 2021 article in *The Morgan Horse* documented that more than 90 percent of world champions (2014–2018) are linebred to him.

**TOP ROW:** Waseeka's In Command; I Will Command; Wham Bam Command. **BOTTOM ROW:** Carlyle Command; Noble Command; Tug Hill Commando.

(photos © Howard Schatzberg, Polly Knoll)

one. Trophy's Corrigan bore just three foals, all by Waseeka's In Command, but these were the stallions I Will Command and Wham Bam Command, both having daughters on the BHOF list, and the mare Ladybird Command, who has also been inducted into the BHOF, though has not yet been profiled.

A bay mare marked with a star, left hind and right front coronets, AFF Beulah was bred by Bob McLemore & Co, Apple Flat Farm, and foaled in 1992. A result of embryo transfer herself, she is the dam of 20 foals, all produced by ET. She holds multiple world champion titles and has seven world champion and five Grand Champion-titled horses among her offspring. Her sire, Cedar Creekharlequin, was a son of I Will Command and out of Serenity Anna Rose (Serenity Flight Time x Serenity Vigilette). Serenity Flight Time was another son of Fleetwing and out of Val's Marcee (Vigilmarch x Lily Dache by Senator Graham). Lily Dache represented several generations of intense Brunk breeding. Both her dam, Flyette, and second dam, Juliette, were daughters of Flyhawk, while her third dam, Julara, was a daughter of Jubilee King, tracing her tail female line to a daughter of Francis Swigert who traced to the rare sire line of European by Justin Morgan. Serenity Vigilette was another Vigilmarch daughter, out of Swiss Brook Sue (Kane's Sonny Boy x Lady Lyda by Senator Graham), tracing her female line through the L. U. breeding pattern.

The dam of AFF Beulah was the multi-world champion and revered MKS Destiny's Echo, a daughter of Serenity Masterpiece; 2d dam, Serenity Wing Song by Black River Major, 3d dam Iron Brook Holly by Vigilmarch, and tracing her tail female line through Devan breeding to the Flint mare by Manchester Black Hawk.



### AFF BEULAH

(Owner, George Schott)

**SIRE LINE:** Cedar Creekharlequin/  
I Will Command/Waseeka's In  
Command/Waseeka's Nocturne/  
Starfire/Senator Graham

**TAIL FEMALE OF SIRE:** Serenity  
Anna Rose/Serenity Vigilette/  
Swiss Brook Sue/Lady Lyda/Cactus/  
Paintbrush Nancy by Flyhawk x  
mare by son of Dan Patch

**SIRE LINE OF DAM:** Serenity

Masterpiece/Serenity Grandmaster/Black River Thor/Fleetwing/  
Captor/Mansfield/Bennington

**TAIL FEMALE LINE:** MKS Destiny's Echo/Serenity Wing Song/  
Ironbrook Holly/Devan Neva/Devan Sal/Starflake/Ceres/Lady  
Select by Select



## MERRIEHILL DUSK TO DAWN

(Owner, Merriehill Farm)

**SIRE LINE:** Hollybrook Stage Rage/Cedar Creekharlequin/I Will Command/Waseeka's In Command/Waseeka's Nocturne/Starfire/Senator Graham

**TAIL FEMALE OF SIRE:** Bery Banke Arboria/Scot's Peggy Lou/Corilyn/Duke's Diamond/

Tipp-A-Roo/Rootina by Mansfield

**SIRE LINE OF DAM:** Merriehill Hooligan/Medomak King Cobra/The Buckeye/Fleetwing/Captor/Mansfield/Bennington/General Gates

**TAIL FEMALE LINE:** Merriehill It's My Day/Brentwood Elegance/Overlook Jessica/Ironwood Portia/Devan Pompom/Lady Hawk/Ceres/Lady Sealect by Sealect

**M**erriehill Dusk To Dawn, a brown mare marked with a star, strip, snip, and right hind sock, was bred by Merriehill Farm, foaled in 2005. She is the dam of nine foals, several of which were produced by ET. She has four world champions, two Grand Champion and one Champion-titled horse among her offspring. Her sire is Hollybrook Stage Rage (Cedar Creekharlequin x Bery Banke Arboria), and she is out of Merriehill It's My Day (Merriehill Hooligan x Brentwood Elegance). Bery Banke Arboria was a daughter of Anthracite (Sir Galaxie x Myrita) who traced his sire line to Mansfield with a blend of Government, Brunk, and Old Vermont breeding. Anthracite was out of the Theis Company-bred mare Myrita (Raymond S Sentney x Amorita). Bery Banke Arboria's dam was Scots Peggy Lou (Broadwall Phildon x Corilyn). Her tail female line traces to the Ladd mare, a daughter of Streeter Horse Jr (Streeter Horse x mare by Hoyt Horse).

Merriehill Hooligan (Medomak King Cobra x Curtain Call), who also holds multiple world champion titles, traces his sire line to Fleetwing, and his tail female line to the Flint mare by Manchester Black Hawk, with lines to Brunk and Waseeka breeding carefully interwoven. Brentwood Elegance, the 2d dam of Merriehill Dusk To Dawn, was a daughter of Waseeka's Skylark, 3d dam Overlook Jessica by Chasley's Quill, and the tail female line traces through Devan breeding again to the Flint mare.

## ~Through Tug Hill Commando~



## GULFWIND DAWNCOMMAND

(Owner, Paul & Evelyn McKnight)

**SIRE LINE:** Tug Hill Commando/Waseeka's In Command/Waseeka's Nocturne/Starfire/Senator Graham

**TAIL FEMALE OF SIRE:** Fiddler's Majesta/Fiddler's Cameo/Fiddler's First/Donna Mae Pepper/Golden River Dona/Lippitt Polly Moro/Croydon Mary by Croydon Prince

**SIRE LINE OF DAM:** Quakers Acre Treble/Trophy's Award/

Trophy/Mentor/Goldfield/Mansfield/Bennington/General Gates

**TAIL FEMALE LINE:** Dawnhill Jubilation/Stillwater Jubilee/Jubilee's Thankful by Jubilee King

**A** bay mare marked with a small star, Gulfwind DawnCommand was bred by Paul and Evelyn McKnight, foaled in 1986. She is the dam of five foals, including four world champions, none produced through ET. She also has one Grand Champion and one Champion-titled horse among her offspring. Her sire was the noted Tug Hill Commando (Waseeka's In Command x Fiddler's Majesta by Kadenvale Don). Kadenvale Don's dam was Jean B (Knickerbocker x Berry's Eunice, 2d dam Lady by The Young General). Knickerbocker was a son of Goldfield and out of Lady Sealect, who traced her female line to the Flint mare.

The dam of Fiddler's Majesta was Fiddler's Cameo (Waseeka's Vivo x Fiddler's First [Orcland Leader x Donna Mae Pepper by Brown Pepper]). Donna Mae Pepper, out of the lovely Golden River Dona (Patrick Geddes x Lippitt Polly Moro), was a full sister of Little Miss Pepper, well-known for her huge trot. Her female line traced to a daughter of Sherman Morgan.

Gulfwind DawnCommand's dam was Dawnhill Jubilation by Quakers Acre Treble, a grandson of Trophy with lines to Dr. Ruthven breeding, and out of Baroosa (Raymond S Sentney x Bobby Gal by Silver Ranger), a Theis Company mare. DawnCommand's 2d dam was Stillwater Jubilee by Orcland Dondarling, and 3d dam, Jubilee's Thankful by Jubilee King. Her tail female line traced to Betty by Pete Morgan (Peters' Morgan x Chaffee mare by V M Hubbard Horse).



## TREBLE'S UNCHAINED MELODY

(Owner, John & Patricia Huse Family)

**SIRE LINE:** Tug Hill Commando/Waseeka's In Command/Waseeka's Nocturne/Starfire/Senator Graham

**TAIL FEMALE OF SIRE:** Fiddler's Majesta/Fiddler's Cameo/Fiddler's First/Donna Mae Pepper/Golden

River Dona/Lippitt Polly Moro/Croydon Mary by Croydon Prince

**SIRE LINE OF DAM:** Treble's Willy Wild/Windy Hill Willie/Windcrest Music Man/Waseeka's Nocturne/Starfire/Senator Graham

**TAIL FEMALE LINE:** MO Justa Wild Melody/Latour's Justa Beauty/Lady Barbara Blair/Show Topper/Whispering Winds by Dude De Jarnette

**A** bay mare marked with a small star, Treble's Unchained Melody was bred by Lisa Nyberg and Carol Hudson, and foaled in 1992. As a weanling, Treble's Unchained Melody was Morgan Breeders Sweepstakes Champion Filly at the New England Morgan Horse Show, and in 1993 was Champion Yearling Filly and Reserve World Champion Junior Mare at the Morgan Grand National Show. She went on to win numerous other regional and national championships.

Owned by the John and Patricia Huse family, she has produced a total of 16 foals for their SpringMill Morgans in Indianapolis,



Indiana. These include seven world champions, as well as two Grand Champion and one Champion-titled horse. All of her world champions and all but two of her foals are by Nostradamus (Noble Flaire x Beam's Victoria). One of her Grand Champions, SpringMill Stardust, is by Liberation First Star (Century Free Spirit x Liberation Starbrite). Several of her foals were produced through ET.

Her dam, MO Justa Wild Melody, was a daughter of Treble's Willy Wild (Windy Hill Willie x Junehill Fascination) and a magical cross for Commando. Windy Hill Willie was a son of Windcrest Music Man (Waseeka's Nocturne x Windcrest's Delight by Upwey Ben Don), representing the classic Nocturne/Ben Don cross. Additionally, several more Upwey Ben Don crosses were blended with old Vermont, Government, and Brunk lines. MO Justa Wild Melody traced her tail female back through Whispering Winds by Dude De Jarnette to a daughter of Black Lion, son of Black Hawk.

## ~Through Noble Command~



### NOBELLE

(Owner, Robert J. Hughes)

**SIRE LINE:** Noble Command/  
Waseeka's In Command/  
Waseeka's Nocturne/Starfire/  
Senator Graham

**TAIL FEMALE OF SIRE:**  
Waseeka's Interlude/Waseeka's  
Thisizit/Upwey Benn Quietude/  
Quietude/Ruth/Laura Jay by  
Ethan Allen 3d

**SIRE LINE OF DAM:** Waseeka's Showtime/Waseeka's In Command/Waseeka's Nocturne/Starfire/Senator Graham

**TAIL FEMALE LINE:** Waseeka Valiant Lady/Helicon Calliope/Windcrest Prima Donna/Ingrid/Urnic by Bennington

Bred by Valiant Farms, Nobelle was a bay mare marked with an irregular small star with small snip and right hind fetlock. She was foaled in 1981. Nobelle holds multiple world champion titles and produced 21 foals including several by ET. Among her offspring are four world champions and one Grand Champion-titled horse, as well as BHOE mare HVK Ancient Cry, detailed next.

Nobelle was a daughter of Noble Command and out of Waseeka Valiant Lady (Waseeka's Showtime x Helicon Calliope). Noble Command's dam, Waseeka's Interlude, was by Waseeka's Nocturne and out of Waseeka's Thisizit (Parade [Cornwallis x Mansphyllis] x Upwey Benn Quietude). Evidence points to the likelihood that Noble Command inherited the large heart gene, which all his daughters received on the X chromosome, through his dam and in turn passed it on to their sons and daughters. This is particularly interesting as Waseeka's Nocturne carried the same female line, being out of Upwey Benn Quietude, as well. Thus, Waseeka's Interlude received the same strong female line through both her sire and dam.

Waseeka's Showtime was a full brother of Waseeka's Interlude. Thus, the pedigree of Nobelle's sire's dam is mirrored by the pedigree of her dam's sire. Waseeka's Nocturne appears four times in her third generation and Waseeka's Thisizit twice. Helicon Calliope was another Nocturne daughter and her dam was Windcrest

Prima Donna by Upwey Ben Don; 2d dam Ingrid by Mansfield; 3d dam Urnic by Bennington, and her female line continuing to a daughter of Sherman Morgan.



### HVK ANCIENT CRY

(Owner, Helen Crawford)

**SIRE LINE:** HVK Make 'Em Cry/  
Noble Flaire/Noble Command/  
Waseeka's In Command/  
Waseeka's Nocturne/Starfire/  
Senator Graham

**TAIL FEMALE OF SIRE:** Lost  
River Sanfield/Jason's Winett/  
Roubikate/Kitty Hawk/Annabella/  
Daisy Knox/Daisy De Jarnette/

Ben's Daisy/Daisy by Billy Bodette

**SIRE LINE OF DAM:** Noble Command/Waseeka's In Command/Waseeka's Nocturne/Starfire/Senator Graham

**TAIL FEMALE LINE:** Nobelle/Waseeka Valiant Lady/Helicon Calliope/Windcrest Prima Donna/Ingrid/Urnic by Bennington

Bred by Herbert Kohler and foaled in 1995, HVK Ancient Cry is a brown mare marked with a star, left hind fetlock, and right hind pastern. She holds a remarkable six wins of the Ladies Park Harness World Championship and is the dam of 11 foals, all produced by ET. Her offspring include six world champions and two Grand Champion and one Champion-titled horse.

Her sire, HVK Make 'Em Cry, is a son of Noble Flaire (Noble Command x Lost River Sanfield) and out of the Vigilmarch daughter HVK Cimarron. HVK Cimarron's dam was the mare Reata's Lucky Charm by Fleetwing, and out of the J. Roy Brunk mare Royal Rose. Royal Rose was a daughter of Allen Royal by Juzan (Jubilee King x Liza Jane by Knox Morgan). Allen Royal's dam was Patty by Allen King (Allen Franklin x Black Bess), who was the sire of Flyhawk's dam and a full brother of Penrod, the sire of Jubilee King. Patty's dam was Patrona (x Senator Reade), a half-sister of Allen King out of Black Bess (Jubilee de Jarnette x John Hoover mare by Tom Corwin), tracing finally to a daughter of Wood's Little Giant, a grandson of Black Hawk.

Royal Rose was out of Black Dee (Herodon x Sentola) the female line tracing to a daughter of Sherman Morgan. The dam of Ancient Cry is Nobelle, also a BHOE profiled mare, whose information is detailed under her section. BHOE mare Lost River Sanfield appears in her pedigree as dam of her grandsire.



### KIM'S BELLEGANTE

(Owner, William  
& Sammi Hazen)

**SIRE LINE:** HVK Bell Flaire/  
Noble Flaire/Noble Command/  
Waseeka's In Command/  
Waseeka's Nocturne/Starfire/  
Senator Graham

**TAIL FEMALE OF SIRE:** HVK  
Belleek/Gallant Colleen/Princess  
Penette/Hopi Magazee/Marie A Z/

Velvet R M/Viola Linsley/Donbelle by Donald

**SIRE LINE OF DAM:** Carlyle Command/Waseeka's In Command/Waseeka's Nocturne/Starfire/Senator Graham

**TAIL FEMALE LINE:** Napaley's Obsession/Futurama's Empress/Paramount's Futurama/Lady Elaine/Barber's Tulip/Stella by Harry Cobden

The most prolific BHOFF mare to date, Kim's Bellegante is the dam of 32 foals, all produced through ET. She holds multiple world champion titles herself, including both Park Harness and Park Saddle. Her offspring include eight world champions and three Grand Champion-titled horses. Most remarkably, her eight world champions—including Mastroianni (x Mizrahi), who was four times World Champion Stallion in 2008, 2009, 2011, and 2012, and then went on to win World Champion Gelding in 2015 and 2016—were produced by six different sires, with just three that are full siblings.

A bay mare with no white markings, she was bred by Kim Hubert, and foaled in 1994. Her sire, HVK Bell Flaire, is a son of the dominant sire and multi-titled, world champion Noble Flaire (Noble Command x Lost River Sanfield), who was World Champion Stallion in 1989 and 1991. Noble Command was a son of Waseeka's In Command out of Waseeka's Interlude (Waseeka's Nocturne x Waseeka's Thisizit). HVK Bell Flaire is also a multi-titled world champion and was World Champion Stallion in 1994. With 335 registered offspring through 2020, he is fast approaching the 380-record held by Courage Of Equinox.

The dam of HVK Bell Flaire was HVK Belleek (HVK Hotspur x Gallant Colleen) tracing her female line to the Healey Mare by Streeter Horse. The dam of Kim's Bellegante was Napaley's Obsession, also a BHOFF inductee, whose information is detailed under her section. BHOFF mare Lost River Sanfield appears in her pedigree as dam of her grandsire.



## GLB BELL OF THE BALL

(Owner, Susan Carlino)

**SIRE LINE:** HVK Bell Flaire/  
Noble Flaire/Noble Command/  
Waseeka's In Command/Waseeka's  
Nocturne/Starfire/Senator Graham

**TAIL FEMALE OF SIRE:**  
HVK Belleek/Gallant Colleen/  
Princess Penette/Hopi Magazee/  
Marie A Z/Velvet R M/Viola  
Linsley/Donbelle by Donald

**SIRE LINE OF DAM:** Supreme Beam/Beamine/Beamington/  
Mr Breezy Cobra/The Airacobra/Flyhawk

**TAIL FEMALE LINE:** Fletcher Music Lee/Windy Hill Liebschen/  
Caramel/Miss Chief/Indian Maid/Gill/Sentinel Lass/Meg by  
General Gates

A brown daughter of HVK Bell Flaire with no white markings, GLB Bell Of The Ball was bred by Lorraine Bumb and foaled in 2000. A multi-titled world champion herself, she is the dam of 12 offspring including several produced by ET, counting four world champions and two Grand Champion-titled horses among her progeny.

GLB Bell Of The Ball is out of 1986 World Champion Mare Fletcher Music Lee, holder of multiple world champion titles. Music Lee was a daughter of Supreme Beam, a son of Beamine (Beamington x Pleasant Lady by Middlebury Ace). Pleasant Lady's dam was Illawana Jean Ann by Captain Red; 2d dam Illawana Ruby by Hiro; 3d dam Nala by Go Hawk; and continued tracing her tail female line through generations of Brunk breeding to the James Greeley mare by Sherman Morgan. Supreme Beam's dam was Pinecrest Lee by Brown Pepper; 2d dam Illini Patty by Dell's Valley Jubilee; 3d dam Patty Pratt by Flyhawk; and continued through several more generations of Brunk breeding, tracing her tail female line to the Atkins mare by Sherman Morgan.

Fletcher Music Lee was out of Windy Hill Liebschen by Windcrest Music Man (Waseeka's Nocturne by Windcrest Delight; 2d dam Seneca Sweetheart). Windy Hill Liebschen was out of Caramel by Nekomia's Archie; 2d dam Miss Chief by Cornwallis; and tracing her tail female line through Meg by General Gates to Sue by Gillig, son of Aristos by Daniel Lambert. BHOFF mare Lost River Sanfield appears in her pedigree as dam of her grandsire.



## HVK OBSIDIAN

(Owner, Dragonsmeade)

**SIRE LINE:** HVK Bell Flaire/  
Noble Flaire/Noble Command/  
Waseeka's In Command/  
Waseeka's Nocturne/Starfire/  
Senator Graham

**TAIL FEMALE OF SIRE:**  
HVK Belleek/Gallant Colleen/  
Princess Penette/Hopi Magazee/  
Marie A Z/Velvet R M/Viola

Linsley/Donbelle by Donald

**SIRE LINE OF DAM:** HVK Fieldmarch/Vigilmarch/Orcland  
Vigildon/Ulendon/Ulysses/Bennington/General Gates

**TAIL FEMALE LINE:** HVK Dragon Fly/HVK Twilight Vigil/  
Waseeka's Interlude/Waseeka's Thisizit/Upwey Benn Quietude/  
Quietude/Ruth/Laura Jay by Ethan Allen 3d

A black mare with no white, HVK Obsidian, foaled in 1996, was bred by Herbert Kohler. She is the dam of 14 foals, several produced by ET. Crowned World Champion Mare in 2001 and winner of multiple world titles, she has five world champions and two Grand Champion-titled horses among her offspring. Another daughter of HVK Bell Flaire, she also has BHOFF mare Lost River Sanfield in her pedigree as dam of her grandsire. Her dam, HVK Dragon Fly, was a daughter of HVK Fieldmarch, a son of Vigilmarch, and out of Julie Bennfield (Bennfield x Cathy Serenity), a full sister to Bennfield's Ace.

Bennfield's Ace was Grand Champion Stallion and his full sister Katy Bennfield Grand Champion Mare at the 1970 Mid-Atlantic and Eastern National Morgan Horse shows. He also won the 1972 Mid-Atlantic National, winning World Champion Stallion three times after the Grand National began in 1973. He was the first to win the World Champion Stallion title that very year and won again in 1979 with his niece Special Kay (Chasley



Superman x Katy Bennfield) crowned World Champion Mare, and his final win was in 1980. Katy Bennfield, meanwhile, also produced leading sire Courage Of Equinox, a full brother of Special Kay, and was the dam of four foals. The dam of HVK Dragon Fly was another Vigilmarch daughter, HVK Twilight Vigil, making Dragon Fly a double granddaughter of that stallion. She was out of Waseeka's Interlude, who was also the dam of Noble Command, so lots of interrelations in Dragon Fly's pedigree. BHO of mare Lost River Sanfield appears in her pedigree as dam of her grandsire.

## ~Through Troutbrook Hallmark~



### DANCITY GRACIOUS REMARK

(Owner, Dragonsmeade)

**SIRE LINE:** Troutbrook Hallmark/Waseeka's In Command/Waseeka's Nocturne/Starfire/Senator Graham

**TAIL FEMALE OF SIRE:** Waseeka's Joy/Windcrest's Delight/Seneca Sweetheart/Hepatica/Isis/Ruby/Henry

Lathrop mare by Green Mountain Banner

**SIRE LINE OF DAM:** Serendipity Storm B/Applevale Cadence/Sealect of Windcrest/Pecos/Cornwallis/Sealect

**TAIL FEMALE LINE:** Dancity Amazin Grace/Casland Annette/Cap's Duchess/Devan Val/Glenhawk/Gleneida/Ulwina/Juno/Gertrude by General Gates

A bay mare marked with connected star, strip, and snip, Dancity Gracious Remark was bred by Mark and Linda Hanson and foaled in 1992. She is the dam of eight foals, one of which was produced by ET. Her offspring include two Grand Champion-titled horses and four world champions, giving her a 50-percent rate of world champion foals. Her sire, Troutbrook Hallmark, was a son of Waseeka's In Command and out of the mare Waseeka's Joy (Waseeka's Nocturne x Windcrest's Delight by Upwey Ben Don) with her tail female line tracing to the Henry Lathrop mare by Green Mountain Banner Jr. Waseeka's Joy was one of eight outstanding full siblings from this cross, which also included Waseeka's Moonshot, Waseeka's Skylark, and Windcrest Music Man.

Dancity Amazin Grace, the dam of Dancity Gracious Remark, was a daughter of Serendipity Storm B (Applevale Cadence x Porvenir B Bonnet). Applevale Cadence was a son of Sealect Of Windcrest (Pecos x Janee) and out of the Upwey Ben Don daughter Harmony Brook, who traced her tail female line to a daughter of Hale's Green Mountain Morgan and out of Casland Annette (Waseeka's Skylark x Cap's Duchess). Porvenir B Bonnet was a daughter of Windcrest Bob B (Upwey Ben Don x Bald Mt Carol) tracing to Babe by King Shenandoah.

Dancity Gracious Remark's second dam was Casland Annette (Waseeka's Skylark x Cap's Duchess) tracing her tail female line through Devan and Government breeding to Gertrude by General Gates and finally, the Goodrich mare by Hackett Horse.

## ~Through Carlyle Command~



### NAPALEY'S OBSESSION

(Owner, WSG Morgans LLC)

**SIRE LINE:** Carlyle Command/Waseeka's In Command/Waseeka's Nocturne/Starfire/Senator Graham

**TAIL FEMALE OF SIRE:** Wawayanda Bay Maebel/Brown Mae/Silver Mae/Mae Morgan/

Betty Dean/Dan's Bess/Nellie Skinner/Lady Skinner by Headlight Morgan

**SIRE LINE OF DAM:** UVM Highlight/Orcland Vigildon/Ulendon/Ulysses/Bennington/General Gates

**TAIL FEMALE LINE:** Futurama's Empress/Paramount's Futurama/Lady Elaine/Barber's Tulip/Stella by Harry Cobden

A brown mare with no white markings, Napaley's Obsession was a daughter of Carlyle Command and out of Futurama's Express. Bred by Norma Harvey, she was foaled in 1988. She is the dam of 12 foals, including several produced by ET and has four world champions and one Grand Champion-titled horse among her offspring. She is also the dam of BHO of mare Kim's Bellegante.

Her sire, 1986 and 1987 World Champion Stallion Carlyle Command GCH, was a son of Waseeka's In Command and out of Wawayanda Bay Maebel (Broadwall Patrician x Brown Mae). Brown Mae was by Raymond S Sentney (Chocolate x Skinner; 2d dam Dan's Bess by Dan), tracing her tail female line to Topsy by Young Bulrush, a son of Bulrush Morgan. Broadwall Patrician, a son of Broadwall St Pat (Parade x Lippitt Georgia), was out of Broadwall Susie Q (Panfield x Danlyn) who also traced her female line to Young Bulrush. Panfield (Canfield x Karina by Goldfield) traced his dam line to a daughter of Hackett Horse.

Futurama's Empress, the dam of Napaley's Obsession, was by UVM Highlight (Orcland Vigildon x Symphonie by Panfield; his 2d dam Inez by Delmont; and his 3d dam Topaz by Mansfield, tracing female line through Milkingstool to daughter of Justin Morgan). Futurama's Empress was out of Paramount's Futurama (Paramount Ambassador by Upwey Ben Don x Lady Elaine by Berry's Billy). Her tail female line traced to the Kilby mare by Brigham Horse, a son of Goldpin, and out of a daughter of Billy Root.

## ~Through Wham Bam Command~



### LONG ACRES BROADWAY

(Owner, Indian Creek Morgan Farm)

**SIRE LINE:** Tug Hill Whamunition/Wham Bam Command/Waseeka's In Command/Waseeka's Nocturne/Starfire/Senator Graham

**TAIL FEMALE OF SIRE:** Fiddler's Majesta/Fiddler's Cameo/Fiddler's First/Donna Mae Pepper/Golden

River Dona/Lippitt Polly Moro/Croydon Mary by Croydon Prince  
**SIRE LINE OF DAM:** Nobility/Noble Command/Waseeka's In

Command/Waseeka's Nocturne/Starfire/Senator Graham

**TAIL FEMALE LINE:** Mantic Mardi Gras/Mantic Monique/  
Porvenir Glamor Girl/Fashion Plate/Vigilda Jane by Ulendon

A bay mare marked with connected star, strip, and snip, left hind coronet, and right hind pastern, Long Acres Broadway was bred by Steven and Paige Long, foaled in 1999. She is the dam of 13 foals, mostly produced by ET, and her offspring include four world champions, two Grand Champion and one Champion-titled horse. Long Acres Broadway herself holds multiple world champion titles and was World Champion Mare for three consecutive years in 2003, 2004, and 2005.

Her sire, Tug Hill Whamunion, was a half-brother of Tug Hill Commando, being out of Fiddler's Majesta, and her grandsire, Wham Bam Command, was a full brother of I Will Command (Waseeka's In Command x Trophy's Corrigan). The dam of Long Acres Broadway was Mantic Mardi Gras by Nobility, a full brother of Noble Flaire (Noble Command x Lost River Sanfield). Thus, BHOF mare Lost River Sanfield appears in the pedigree of Long Acres Broadway as the dam of her maternal grandsire. Her second dam, Mantic Monique, was by Mantic Peter Frost, a son of Waseeka Peter Piper out of Ledgemere Frolic, who traced her female line through the Milkingstool mare. Mantic Monique was out of Porvenir Glamour Girl (Windcrest Bob B by Upwey Ben Don x Fashion Plate by Gay Dancer). Her tail female line continues through Fashion Plate's dam Vigilda Jane (Ulendon x Vigilda Burkland) and traces back through the Milkingstool mare to the Old James Clark mare by Justin Morgan.

## CONCLUSION

The BHOF mares are represented strongly by certain families, but there is also diversity. Doubtless there are numerous mares, including many of different families, than those represented here who may have had the ability to achieve similar records but for whatever reason they were not bred, or their offspring were not shown. The use of ET also comes into play, as it can provide many advantages in allowing a valuable mare to produce without interrupting her show career, or to get foals from a mare who perhaps could not easily carry a foal herself due to age or health reasons. When used extensively, it may enable a mare to produce many more offspring than she otherwise might naturally produce or produce multiple offspring in a single year. Breeders who invest in this are more likely to show the resulting offspring, or sell them to buyers who will show them, and naturally the more a mare's offspring are shown the more likely they are to become champions. However, several mares in this list have produced a number of foals, including the required three or more world champions, without the aid of ET.

The mare lines woven into these families are also very important, as well as many of them likely passing on the large heart gene to their sons and daughters. The large heart gene

gained recognition in the Thoroughbred breed due to the work of the late journalist Marianna Haun, who became interested in the extraordinary performance ability of Triple Crown winner Secretariat. Marianna worked extensively tracing pedigrees and first identified the source as coming through the great historic racehorse Eclipse, and eventually further back through Hautboy. She was able to identify the likely presence of the large heart by such factors as performance, longevity, or siring daughters who proved to be exceptional producers—all of which may influence a Morgan mare's presence on this prestigious list. Enlisting the help of the University of Kentucky, her theories were proven on living horses she identified as likely carriers, all of which could be traced on the X chromosome back to Hautboy. Subsequently, the large heart gene was identified in Standardbred, Morgan, Quarter Horse, and other breeds which can be traced to the same source. The pedigree of Justin Morgan can be traced back on the X chromosome to the large heart gene and given the many eyewitness accounts of his history, it is almost certain he had it and passed it on through his daughters. Time has also borne out this theory as exceptional performers can invariably be traced back on the X chromosome to a probable carrier of the large heart.

Altogether, the BHOF mares may be traced back overwhelmingly to a predominance of Brunk, Government, and old Vermont breeding, and a representation of many different breeding programs. The study of tracking the produce of mares through the BHOF system will provide interesting and valuable information useful to breeders many years in the future, and hopefully continue to expand and encourage participation and recognition of the valuable contribution mares provide to a breeding program. ■

## RESOURCES

- Allbreed Pedigree, <http://www.allbreedpedigree.com>
- American Morgan Horse Association, "Online Morgan Registry," <http://services.morganhorse.com/PortalTools/HorseRegistry/Index.cfm>
- American Morgan Horse Register, Inc. *American Morgan Horse Register*, Vol. IV, New York: Rand McNally & Company, 1921.
- Battell, Joseph. *American Stallion Register*, Vols. I–III, Middlebury, Vermont: American Publishing Company, 1909–1913.
- Battell, Joseph. *The Morgan Horse and Register*, Vol. I, Middlebury, Vermont: Register Printing Company, 1894.
- Battell, Joseph. *The Morgan Horse and Register*, Vols. II–III, Middlebury, Vermont: American Publishing Company, 1905–1915.
- The Morgan Horse Club, *American Morgan Horse Register*, Vols. V–VIII, New York, New York: The Morgan Horse Club, Inc, 1939–1960.
- *The Morgan Horse*, 1941–1964.

**if it's about the Morgan breed...it's in the official breed journal!**

**Subscribe: 802-985-4944 ext. 1; [www.morganhorse.com/magazine/subscribe](http://www.morganhorse.com/magazine/subscribe)**